



HDMI Pass Through Decora Wall Plate

- Full 1080p support
- Available in Black, White, Ivory and Aluminum covers
- Lifetime Warranty



Specifications: HDMI Pass Through Decora Wall Plate

Electrical Specifications:

Conductor DC Resistance:	376.96Ω/100m (maximum)
Impedance:	100±10Ω
Time Delay Skew:	Within a pair < 111ps/cable Between pairs < 1.78ns/cable
Attenuation:	0.3~825MHz <5db/6m 0.825~2.475GHz <5~12db/6m 2.475~4.125GHz <12~20db/6m 4.125~5.10GHz <20~25db/6m

Physical Specifications:

Temperature Rating:	80°C
Voltage Rating:	30V
Operating Temperature:	0°C to 50°C
Storage Temperature:	-25°C to 70°C
Approvals:	CE
Warranty:	Lifetime
Package Type:	Polybag

Conductor (4 pair):

Conductor:	30AWG (7/0.1 TC)
Insulation:	FM-PE ID: ø0.78±0.05
4 Pairs:	White/Brown, White/Red White/Green, White/Blue
Drain:	30AWG (7/0.10TC)
Shield:	AL Mylar, Coverage 100%

Conductor (1 Pair, 5 conductors):

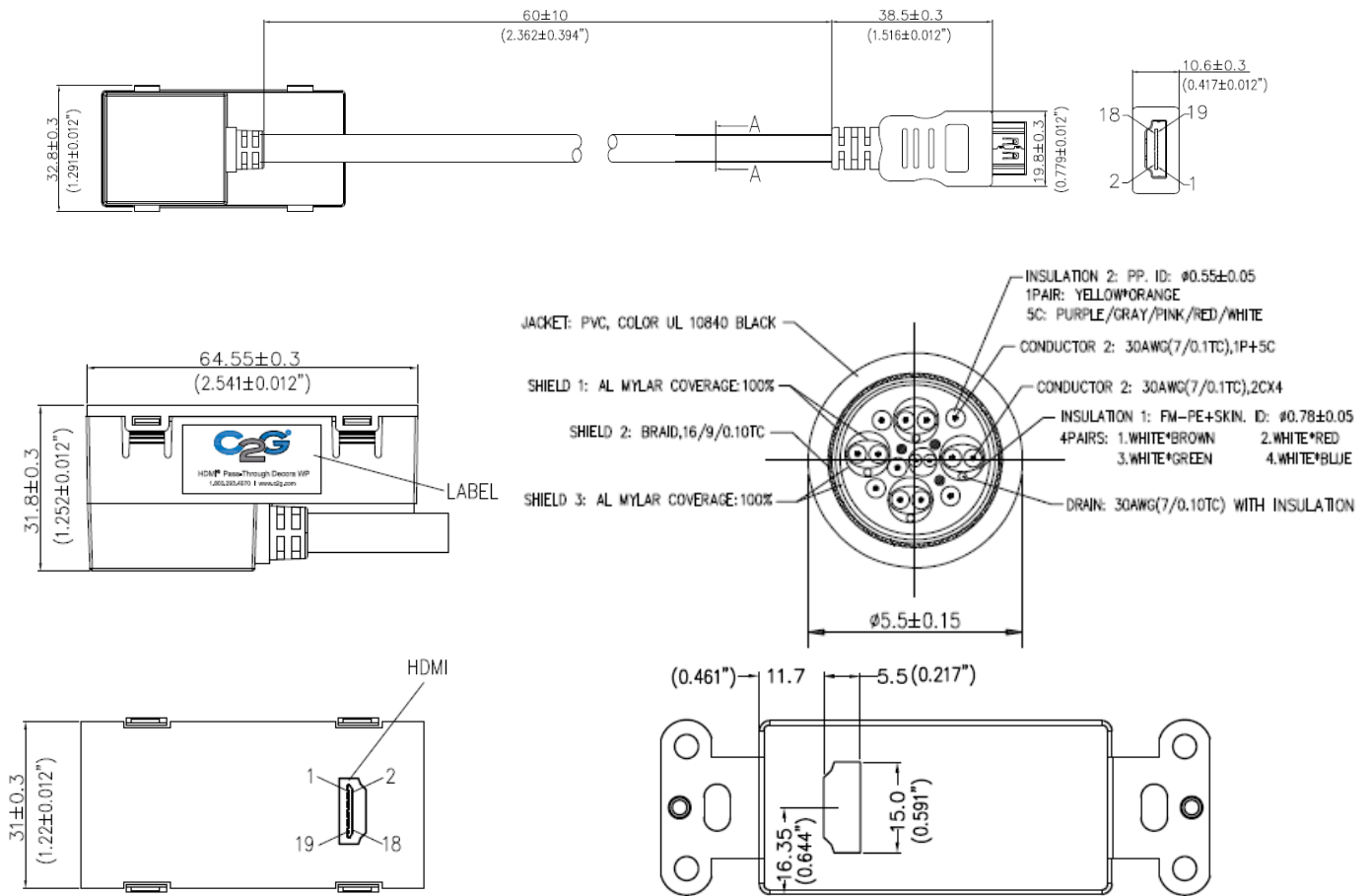
Conductor:	30AWG (7/0.1TC)
Insulation:	PP. ID: ø0.55±0.05
1 Pair:	Yellow/Orange
5C:	Purple/Gray/Pink/Red/White

Overall Cable

Jacket:	PVC, Black
Shield:	AL Mylar Coverage 100%
OD:	Braid, 16/9/0.10TC 5.5±0.15



Specifications: HDMI Pass Through Decora Wall Plate



Part Number	Description	Weight (lbs)
41042	HDMI Pass Through Wall Plate—Aluminum	0.010
41043	HDMI Pass Through Wall Plate—White	0.010
41044	HDMI Pass Through Wall Plate—Ivory	0.010
41045	HDMI Pass Through Wall Plate—Black	0.010

