

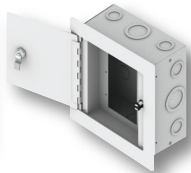


# WALL BOX COMPARISON GUIDE

**WB-TSC-SM-7**



**WB-3G**



**WB-4G**



**WB-X1**



**WB-X2**



**WB-X3**



**WB-RxG**



**WB-PRxG**



**WB-MRxG**



**WB-PSxG**



**WB-MSxG**



**PWB-CMU8**



**PWB-100**



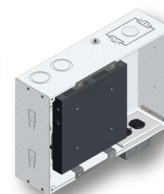
**PWB-200  
PWB-203**



**PWB-250  
PWB-253**



**PWB-270  
PWB-273**



**PWB-280**



**PWB-320/XL**



**PWB-323/XL**



**PWB-450**



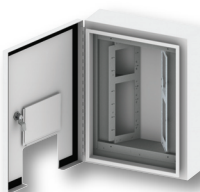
**PWB-HVBX**



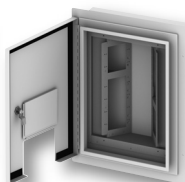
**OWB-CP1**



**OWB-X3-SM**



**OWB-X3-FM**



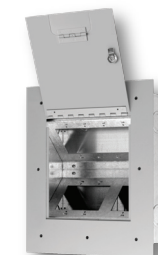
**OWB-500P**



**SMWB**



**FL-500P-JL**



**FL-600P-JL**



## FSR Inc.

244 Bergen Boulevard, Woodland Park, NJ 07424 · Phone: 973.998.2300 · Fax: 973.785.4207  
Web: [www.fsrinc.com](http://www.fsrinc.com) · E-mail: [sales@fsrinc.com](mailto:sales@fsrinc.com) · Order Desk: 1-800-332-FSR1



Objects pictured are not to scale.

## Back Box Specifications

## Cover Specifications

Application	Model	Installation Type	Back Box Size* (")	Cover Styles Available	Gang Capacity (depends on model)	Cover Finishes Available	Door Types Available
<b>General Use/ Connector and Control Wall Plate Mounting</b>	WB-3G	New/Existing Construction	7.5 x 7.5 x 4 or 6	Recessed	3-Gang	White	Hinged Locking
	WB-4G	New/Existing Construction	9.25 x 9.25 x 4 or 6	Recessed	4-Gang	White	Hinged Locking
	SMWB	New/Existing Construction	New - Varies with Gang Box Size	Optional	1,2,3,4 Gang	Black or White	NA
<b>Medium Capacity</b>	WB-X1	New/Existing Construction	12.38 x 9.38 x 3.97	Recessed or Surface	4-Gang, 16 IPS OR 15 XLR	Black or White	Hinged Locking
<b>Large Capacity</b>	WB-X2	New/Existing Construction	12.38 x 12.38 x 3.97	Recessed or Surface	One 2-Gang and One 4-Gang or 24 IPS or 24 XLR	Black or White	Hinged Locking
<b>Extra Large Capacity</b>	WB-X3	New/Existing Construction	16.75 x 12.38 x 3.97	Recessed or Surface	Three 2-Gang and One 4-Gang or 36 IPS or 32 XLR	Black or White	Hinged Locking
<b>Wall Plate Mounting Adapters</b>	WB-TSC-SM-7	New/Existing Construction	Plate that mounts on 2-gang back box	Surface	2-Gang	White	Hinged Locking Cover with Window
	WB-RxG	New/Existing Construction	Varies with Gang Box Size	Recessed	2-,3-,4-Gang	White	None
	WB-PRxG	New/Existing Construction	Varies with Gang Box Size	Recessed	2-,3-,4-Gang	White	Hinged Locking Cover With Window
	WB-MRxG	New/Existing Construction	Varies with Gang Box Size	Recessed	2-,3-,4-Gang	White	Hinged Locking Solid Cover
	WB-PSxG	New/Existing Construction	Varies with Gang Box Size	Surface	2-,3-,4-,5-Gang	White	Hinged Locking Cover With Window
	WB-MSxG	New/Existing Construction	Varies with Gang Box Size	Surface	1-,2-,3-,4-,5-Gang	White	Hinged Locking Solid Cover
<b>Project Wall Box</b>	PWB-CMU8	Plasma or Flat Panel Cable Access Box	15.62 x 5.00 x 8.00	Flush with Cable Access	2-gang 3.25" depth compartment	White	Hinged Locking Cover or Screw Down
	PWB-100		10.94 x 5.23 x 3.63	Flush with Cable Access	1-Gang with 6 IPS capacity	Black or White	Screw Down
	PWB-200		7.10 x 7.10 x 4	Flush with Cable Access	2x1-Gang with 6 IPS capacity	Black or White	Screw Down
	PWB-203		7.10 x 7.10 x 3	Flush with Cable Access	2x1-Gang with 6 IPS capacity	Black or White	Screw Down
	PWB-250		14.25 x 7.10 x 4	Flush with Cable Access	3x1-Gang with 6 IPS capacity	Black or White	Screw Down
	PWB-253		14.25 x 7.10 x 3	Flush with Cable Access	3x1-Gang with 6 IPS capacity	Black or White	Screw Down
	PWB-270/273		14.25 x 10.00 x 4 (3 on PWB-273)	Flush with Cable Access	(2) 1-Gang special purpose housing for Crestron Model DM-RMC-Scaler-C and PS	Black or White	Screw Down
	PWB-280	New/Existing Construction	14.25 x 7.10 x 3	Flush with Cable Access	Housing for SVSI encoder	Black or White	Screw Down
	PWB-320	New/Existing Construction	14.25 x 14.25 x 4	Optional Vented Cover	Shelf Rack & 6 IPS	White	Screw Down
	PWB-323	New/Existing Construction	14.25 x 14.25 x 3	Optional Vented Cover	Shelf Rack & 6 IPS	White	Screw Down
	PWB-320/XL	New/Existing Construction	14.25 x 22.25 x 4	Optional Vented Cover	Optional internal brackets	White	Screw Down
	PWB-323/XL	New/Existing Construction	14.25 x 22.25 x 3	Optional Vented Cover	Optional internal brackets	White	Screw Down
	PWB-450	New/Existing Construction	14.20 x 17	Flush with Cable Access	accepts Crestron DM-RMC-4K-SCALER-C or PWB-450-MMS bracket	Black or White	Screw Down
	HVBX	New/Existing Construction	28.62 x 14.25	Flush with Cable Access	Optional internal brackets	Black or White	Screw Down
<b>Outdoor Weatherbox for Control/ Interface</b>	OWB-CP1	Outdoor	9.25 x 9.25	Surface, Recessed or Pole Options	2-Gang, 3-Gang or special panel mounting	White	Hinged Locking Cover With Window or Solid
	OWB-X3-SM	Outdoor	20.08 x 15	Surface	Three 2-Gang and One 4-Gang or 36 IPS or 32 XLR	White	Hinged Locking Solid Cover
	OWB-X3-FM	Outdoor	20.08 x 15	Flush	Three 2-Gang and One 4-Gang or 36 IPS or 32 XLR	White	Hinged Locking Solid Cover
	OWB-500P	Outdoor	10.03 x 12.00	Surface or Flush	Ganged versions available	White	Hinged Locking Cover
<b>Floor to Wall Conversion</b>	FL-500P-JL	New/Existing Construction	10 x 12 x 4 or 6	Flush with Cable Access	Configurable	White	Hinged Locking Cover
	FL-600P-JL	New/Existing Construction	13.50 x 12 x 4 or 6	Flush with Cable Access	Configurable	White	Hinged Locking Cover
<b>Fire Rated</b>	PWB-FR-450	New/Existing Construction	14.20 x 17	Flush with Cable Access	Accepts Crestron DM-RMC-4K-SCALER-C	Black or White	Hinged Locking Cover



Specifications are subject to change without notice. Dimensions are approximate. Always check current spec sheets for complete descriptions of boxes. Detailed Specs & Drawings are available at: [www.fsrinc.com](http://www.fsrinc.com)

Phone: 973-998-2300 · Order Desk Fax: 973-785-4207 · E-Mail: [sales@fsrinc.com](mailto:sales@fsrinc.com)