

# PowerTap

THE HIDDEN POWER CENTER



## ASSEMBLY INSTRUCTIONS

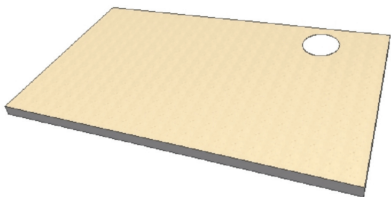
### TOOLS NEEDED

Adjustable hole saw bit or Jig Saw (Sabre Saw).



**NOTE: ALWAYS WEAR SAFETY GLASSES WHEN DRILLING OR CUTTING**

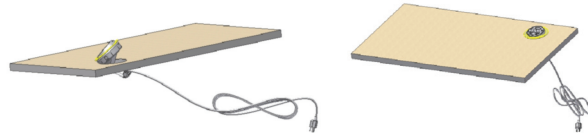
**1** Determine the grommet placement on your desk or table top. Use the attached template as your guide to set hole saw diameter, or as a pattern for the Jig Saw. Tape the pattern to top.



**2** Drill a hole in the center large enough for the saw blade to start cutting. Closely follow the circle perimeter with the blade.

**3** Feed the cables through the hole first and seat grommet in place.

If hole is a little loose for grommet, you can use a hot melt glue to fix in place.



### 4 OPERATION

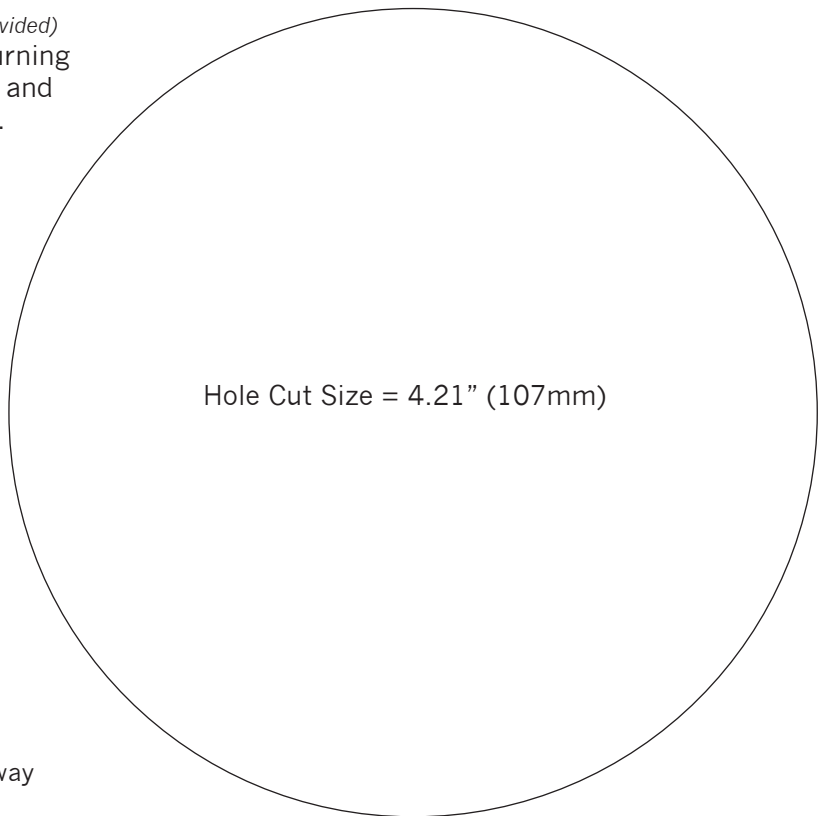
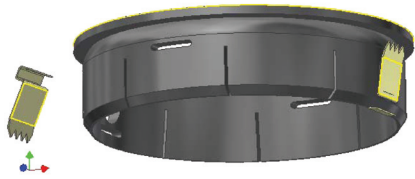
Plug the power cord into a wall outlet.

Using a standard Ethernet Patch Cable, plug one end into wall Ethernet Wall Jack or Router and the other end into one of the Short Pigtails of the PowerTap. Repeat step for second Ethernet Port.

Slide tab back to enable pivoting the PowerTap. When rotation is complete it will lock in place.

**Product Warranty:** Sunway warrants its product for period of one year from date of purchase. We will repair or replace any product found to be defective in material or workmanship during the warranty period.

**Optional Locking Shims:** *(provided)*  
After installation, if there is any turning or movement between the surface and the PowerTap, use locking shims.



**Choking Hazard:**  
Keep small parts and plastic bags away from children.

